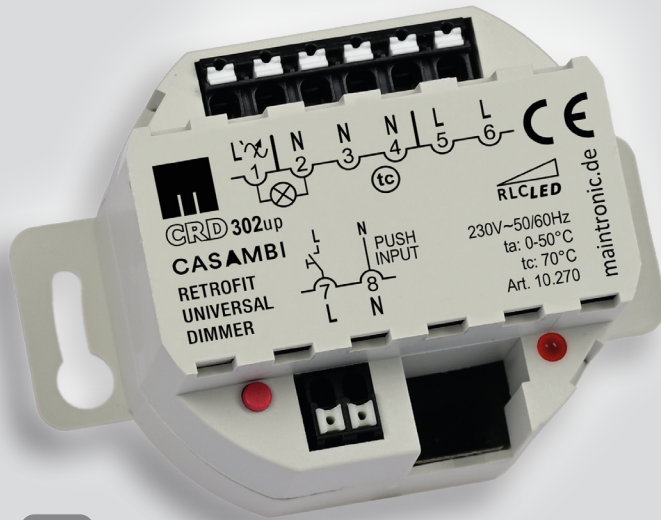


CRD302 UP

Item number: 10.270



CASAMBI

- Dimming load max. 300 VA
- R,L,C including LED Retrofit
- AdaptiveDIM (*)
- Load number indicator (indication how much luminaires can be connected)
- Additional push-button input
- Control with Casambi and push-button
- Rich data and diagnostic tools

Funktionen

Digital leading edge and trailing edge phase dimmer with automatic load detection for a single dimmed phase with a max. load of 300VA. Equipped with an additional push button input which extends the dimmer with an fast analogue control. Local control is so much easier.

CASAMBI wireless operation

Casambi App automatically identifies the device and can be integrated into existing networks. All functions triggered by the buttons are individually configurable.

Installation

Flush-mounted housing for installation in switch boxes or junction boxes. Attachment with side flaps, these can be removed for installation.



Astro functions (Sunrise, Sunset)



Scheduler and Scenes



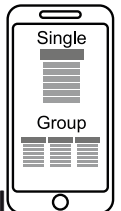
Collective actions (Grouping)



Push-button inputs for local control



Remote push-button control (Easyfit or XPress)



AdaptiveDIM (*)

The device has been specially developed to meet the modern requirements of LED lighting. Commissioning is very easy: Connect the target load, switch on, ready.

AdaptiveDIM automatically determines the stable lowest brightness and the ideal characteristic curve during the initial setup. There is no need to worry about dimming procedures or technical parameters.

CASAMBI LED-/Retrofit-Dimmer UP

CRD302 UP

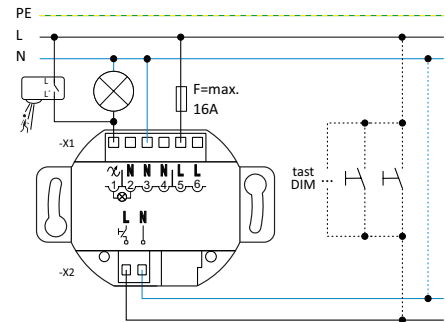
Item number: 10.270



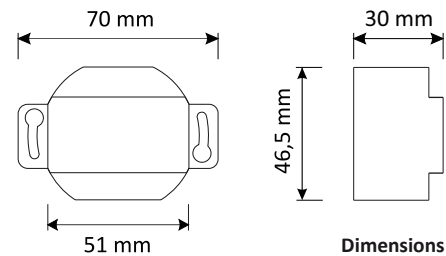
Specification

Power supply		220 ... 240V AC 50/60Hz
Max. output power		3 ... 300 VA
Power consumption	Watts (on idle / full load)	0,6W / 1,8W
Terminals, Wiring	push-in spring connectors	fine/ single-wire: 0,5 ... 1,5 mm ² (AWG20 ... AWG16) fine-wire with ferrule: 0,5 ... 0,75 mm ²
	Striping length	6 mm (+/- 0,5 mm)
	Tightening torque	max. 0,2 Nm
Operation- and indication units		Device Button, Status-LED
Protection circuits		Short circuit with auto restart, over temperature (derating), over current, over Voltage
Environment	Type of protection	IP20, Class II
	Temperature ambient (ta)	-0°...+50° C
	Temperature critical (tc)	+70 °C
	Humidity	5 - 80% non-condensing
Casambi	Bluetooth Low Energy (BLE)	App available for Android and iOS
Alternate control		Casambi enabled push-button input (230V AC)
Approbation		CE
Design	Enclosure	Flush mouted housing
	Installation	flush-mounted or junction box
	Dimensions (height x width x depth)	46,5 x 70(51) x 30 (flaps can be removed)
	Ceiling installation	Ø 55mm
	Weight	70g
	Housing	plastics, white
Customs tariff number	HS-Code/ TARIC-Number	85365080
Co-applicable documents		Installation instructions; manual

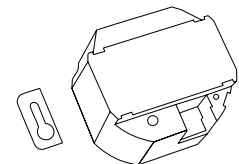
Important: Notice all safety instructions and related documents for Installation and operation.



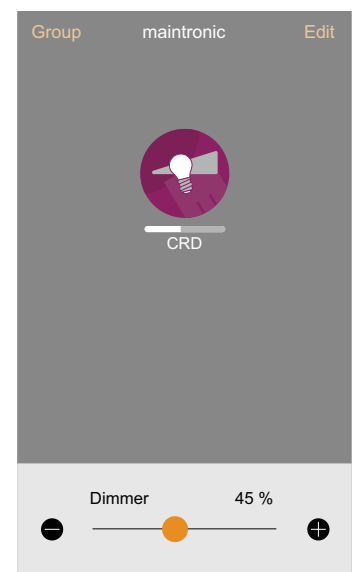
Connection diagram



Dimensions



Removeable flaps



Screenshot APP
CRD



Easy comissioning and control
by Casambi App

Valid from following versions: H1, F0.1 - Document: 10270_TD_en_A4_CRD302_20210629



Carl-Zeiss-Str. 10-14
97424 Schweinfurt / Germany

Tel. +49(0)9721-7766 0
Fax. +49(0)9721-7766 18

www.maintronic.de
info@maintronic.de